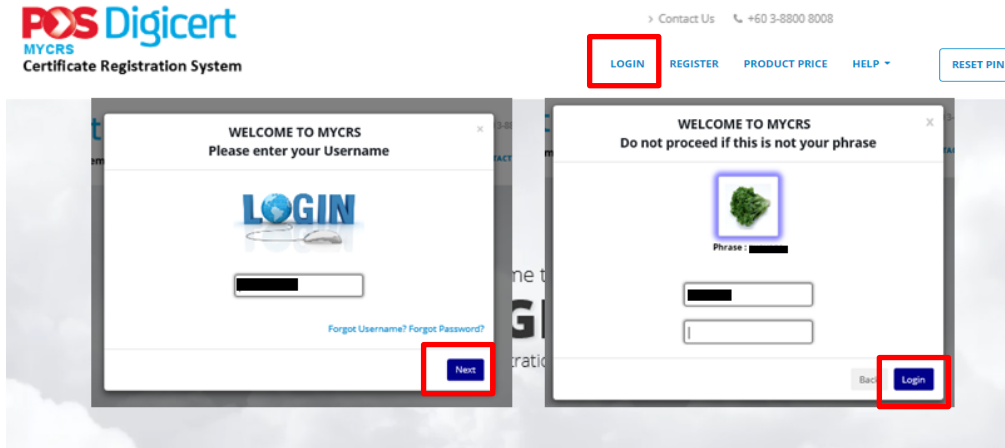
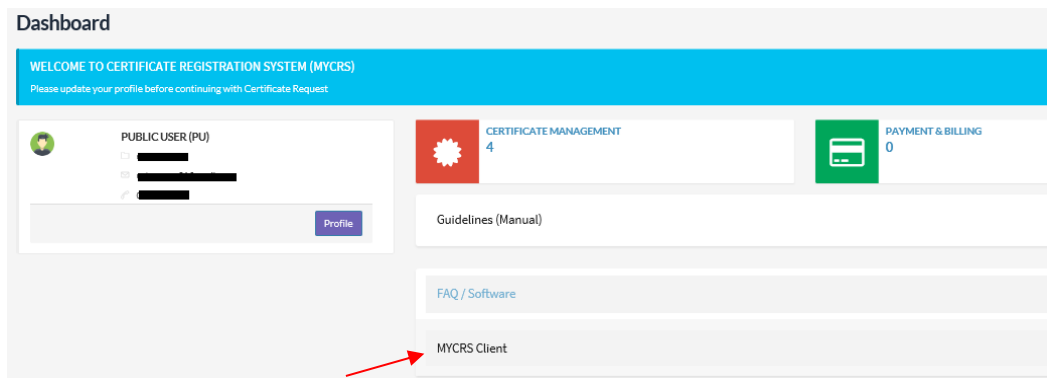


## How to install MYCRS Client

Additional client application is needed to complete certificate renewal and to unblock token.



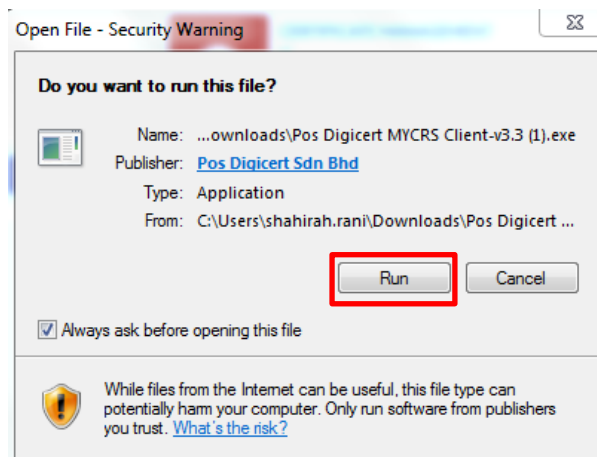
1. Browse to <https://mycrs.posdigicert.com.my>. Click on **Login** menu. Enter your username and click on **Next** button. Please note that you have set your MYCRS username, password, security image and phrase during registration or certificate request. Please note to verify the displayed image and phrase. If the displayed image is incorrect, do not proceed. If the displayed image is correct, enter your password and click on **Login** button. If you entered a wrong username, click on **Back** button to re-enter your username.



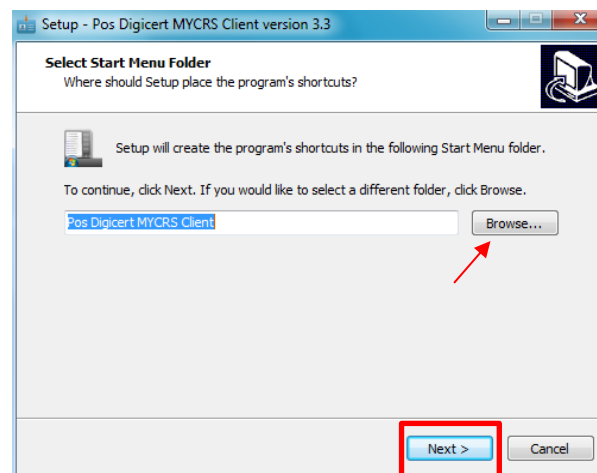
2. At **Dashboard** page, click on **FAQ / Software** section. Click on **MYCRS Client** link to download the application installer.



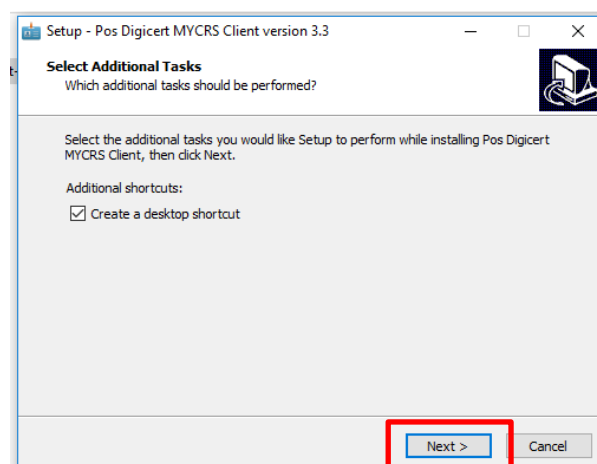
3. **Double click** on the downloaded file to launch the installer.



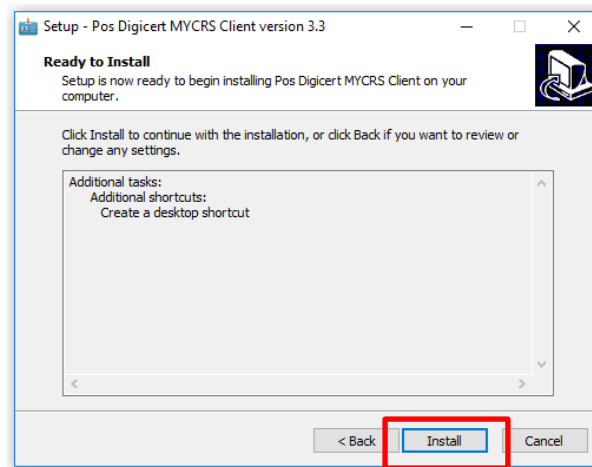
4. Click on **Run** button.



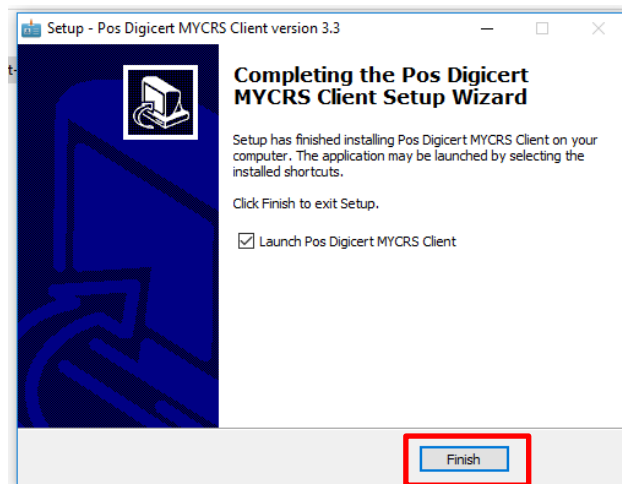
5. Click on **Browse** button to choose a path to download the file. Click on **Next >** button.



6. If you wish to create a shortcut on the desktop, tick at **Create a desktop shortcut**. Click on **Next** button.



7. Click on **Install** button.



8. Click on **Finish** button.